

俯瞰大都会的现代尊贵住所 Ultimate Elegancy at the Roof



项目名称: 香港曼克顿山
项目地址: 62B, Tower 3, Manhattan Hill, No.1 Po Lun Street, Kowloon, Hong Kong
项目面积: 2,100平方尺 (内部), 1,300平方尺 (外部)
设计师: 梁志天, Ashley Chan, Donald Lau
承建商: Grandway Construction and Design Limited
摄影师: Pazu Chu
完成日期: 2007年6月底



坐落曼克顿山第六十二层, 这个顶层复式单位拥有偌大宽阔的空间, 俯瞰城中美景, 尽展非凡美态。玄关靠右的墙身, 以人造鳄鱼纹皮革作为主题墙, 衬托沙金框抽象画作, 弥漫阵阵尊贵气质。步近全身落地玻璃, 仿佛被180度的维多利亚海港景色环绕着, 居高临下, 海天一色, 融合四周高高低低的楼房。穿过深棕色的绒毛沙发, 望向由黑玻璃组成的六人餐桌, 在天花板水晶灯饰的闪照下, 可看见灰玻璃后的半开放式厨房, 把空间连成一线, 深度的延伸建构成层次丰富的图画。为彰显现代设计的美学精神, 设计师把隐约而匀称的线条分布在空间内, 地上若隐若现的横向木纹、主题墙上的四方车线及木造间隔墙的方纹等, 皆用来加强空间的深度及宽阔感。

经过客厅的屏幕大电视, 走进由浅褐色木材间隔的偏厅, 白色的沙发可化身成舒适的单人床, 而木材间隔侧装有两度同色系趟门, 轻轻一拉, 自成一角的客房就此诞生。沿曲尺楼梯直上, 转角处设置的镜子在黑色皮革主题墙衬托下, 将上下两层的空间在视觉上连接起来, 将增强空间与空间之间的联系。上层分为主人房、单人房及书房三个特定空间。踏进浅色系的主人房, 感觉跳脱轻松, 加上沙金色框着的现代随笔风格画作, 颜色鲜艳, 为生活增添点点艺术气息。分隔单人房跟书房的是一堵浅棕色木墙, 设计师重施空间魔法, 一扇趟门随时随

意把空间变法。走到走廊尽头, 半开放式的玻璃衣柜为高贵雅致的主人套房掀起序幕。向右走, 来到宽阔的主人间, 主题墙上由银色闪亮布料织成的天空, 衬托着飞舞中的金蝶, 增添华丽气息。家具均采用深浅褐色交错的布料, 以突显空间的一致及和谐, 用料则以皮革及绒毛为主, 彰显高人一等的气派。玻璃衣柜的另一边, 是主人房浴室, 选用欧洲进口的洁具并内置屏幕电视, 让住客沐浴于奢华之中。

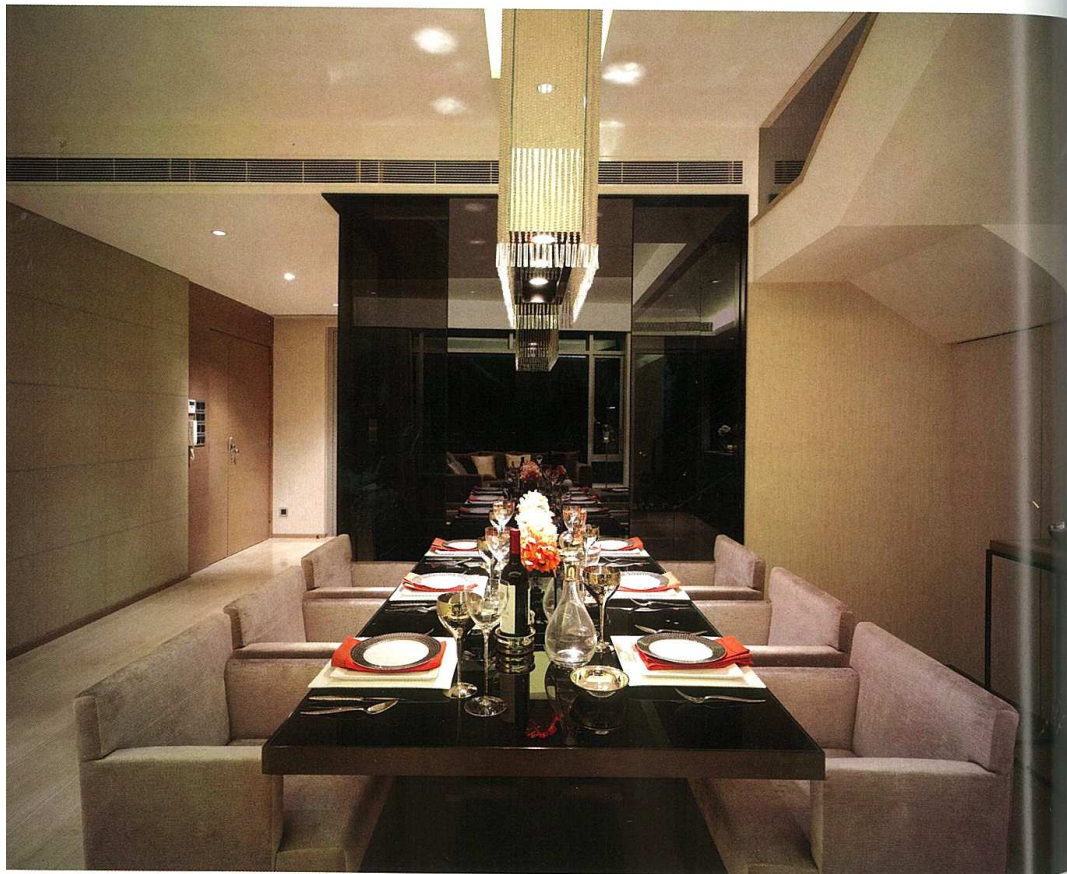
复式住宅上下两层均设有露天空间, 地下跟墙身皆采用日本户外木, 质感自然。下层的空中花园连接厨房, 让户主在周末的日光下与家人品尝早点, 共聚天伦。而上层的露天空间则以自动窗帘揭开序幕, 户外的设施一应俱全, 是供朋友齐聚要乐的理想地。

整所复式住宅以米棕色为主调, 浅色的布局如画般突显深色的线条美, 加强立体感。而设计师在空间细处放置不同通透度的玻璃, 视觉上淡化了每个特定空间之间的阻隔, 增强透明度。设计概念则以线条连通, 侧重空间的灵活性, 以简单素材加强空间的活动功能并同时保持一贯的简单美。舒适优雅的设计恰如其分, 突显住客的优质生活态度。

不一样的设计, 把坐落于繁盛市区中的复式单位升格成具备大宅式华丽的尊贵住所, 让住客感受现代简约中的非凡高尚气派。

Amidst the bustle and hustle city, an ultimate elegance at the roof is offered to those who belong to the modern simplicity lifestyle. Situated on the 62nd floor, it is the uppermost duplex of Manhattan Hill. This spacious and eminent duplex presents an extraordinary living experience in a claustrophobic town that no other apartments can compare with. This impressive duplex comes with stunning panoramic sea view and oozes elegance from the moment one enters.

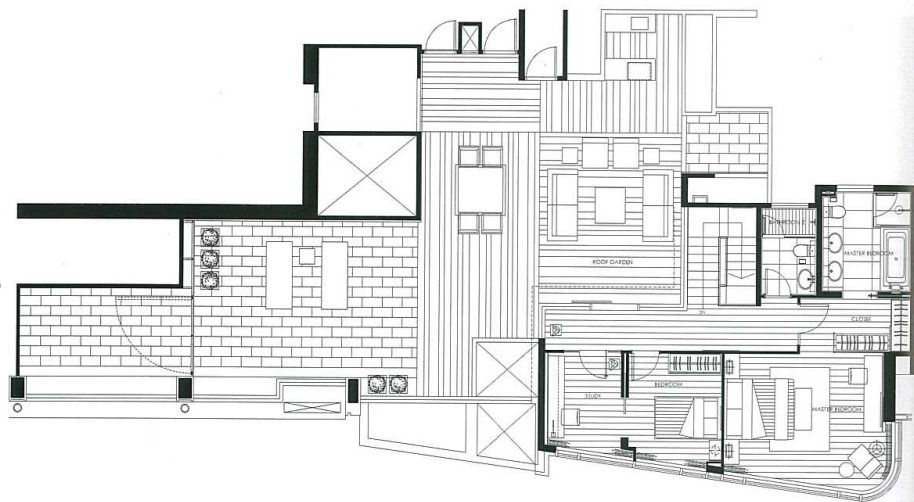
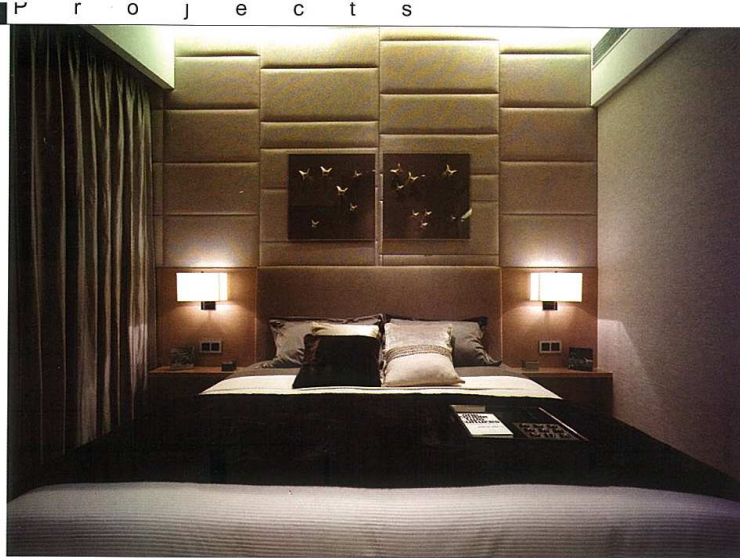
Stepping in the living room, a featured crocodile pattern leather wall leads one to the full-height windows where a 180-degree Victoria Harbor view embraced. The blues are merged into one, offering a commanding view from a vantage. Sitting at the huge velvet couch, looking towards the six-seated black-mirrored dining table, the semi-open kitchen can be found in the line through the grey-tinted glass, it creates an interesting layered view inside the house. In realizing the aesthetic spirit of modernity, designer applies refined and subtle symmetrical lines to enhance the depth and dimensions of the space; like the subtle lines on the floor tiles, sewing lines on the feature wall and natural wood patterns on the walls etc.



Pass by the partition behind the LCD TV at the living room, where lies a sandy beige relaxing area. The white couch can be transformed into a single bed to be enclosed by the two sliding doors set next to ends of the partition. Just a simple pull, a private and comfortable guestroom is created. Across the living area, a zigzag staircase sprawling to the upper level is lined with serpeggiante, and a black-leather feature wall with a mirror are set to provide a visual link between the upper and lower floor in order to harmonize different spaces.

On the upper floor, it is divided into three distinct zones: they are master bedroom, single bedroom and study. In the single bedroom, one can immerse in an energetic and relaxing ambience. A modern jotting painting in alluvial golden frame is set on the wall, where the blazing color fills the room with artistic sense. A simple sliding door becomes a magic spell; the two rooms can be connected or separated according to one's own will.

Walking down the corridor, a resplendent transparent wardrobe serves as a welcoming speech, leads one to enter the delicate lofty master bedroom. The silver shimmering fabricated feature wall is used to set off the flying golden butterfly artifacts in order to manifest the ultimate elegance of this duplex. Next to the wardrobe, it's a well-equipped bathroom, mounted with LCD TV on the wall as well as the best sanitary wares imported from Europe; the entire space is immersed in a sense of splendor.



梁志天

梁志天设计师有限公司创办人

主要奖项

六度获得素有室内设计奥斯卡之称的Andrew Martin International Awards

作品连续数年间“亚太室内设计大奖”夺得多项最高奖项

Gold Key Awards

Hospitality Design Awards



This extraordinary duplex consists of an outdoor area on each floor; designer applies Japanese outdoor wood as floor tiles to deliver a natural sense. Owner can enjoy a refreshing breakfast with family under the warmth of the sun, and it might be a good choice for a laid back weekend. Outdoor area at the upper floor is well-equipped with fine outdoor facilities offering a wonderful place for buddies' chat and gathering.

The key hue scheme is fully applied within the duplex; the undertone is served as a canvas while the bister acts as the high-lights, its contrasting outcome strengthens the coherence of the space. Flexibility and permeability are the key design features here - a simple sliding door or a grey mirror as a magic trick to create mysterious dialogues between different spaces or layered views. This tranquil duplex demonstrates its uniqueness by employing subtle symmetric lines to correlate every single space, focusing on the perfect balance of functionality and aesthetics of simplicity, where an ultimate splendid ambience envelopes every single corner and makes this excellent duplex come to life.

Stay in the apartment, feel the extensity, breathe in the unprecedented sublime and experience the ultimate elegance of the simplicity.